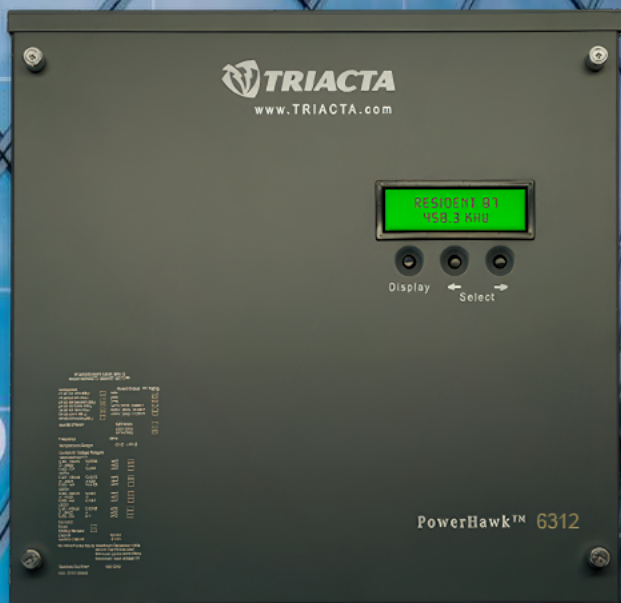


Product Guide

Triacta Power Solutions Electrical Submetering



Content

Triacta Overview and Contacts Page 3

Electrical Submeters

PowerHawk 4000 Series Multi-point Meters Page 5

PowerHawk 6000 Series Multi-point Meters Page 9

Triacta GATEWAY Multi-point Meters Page 15

Triactra GATEWAY-S Multi-point Meters Page 26

Current Transformers and CT Cables

333mV Split Core CTs Page 31

333mV Coil CTs Page 32

80mA Solid Core CTs Page 33

5A Solid Core CTs Page 33

5A Split Core CTs Page 35

CT Cables Page 37

Shorting Terminations, Power Transformers & other Accessories

Shorting and Termination Page 41

PT Assembly Page 42

Backplate and Dust Covers Page 42



Triacta Power Solutions LP

Triacta Power Solutions designs and manufactures advanced electrical metering systems for energy monitoring/management and revenue-based billing applications across all market sectors – residential, commercial, industrial, institutional. Now deploying its 5th generation of advanced metering technology throughout North America, Triacta's non-proprietary, multi-point metering platform responds directly to the demand for more effective, efficient, and accessible solutions for energy management.

Long known for its high-reliability, revenue-grade, multi-protocol sub-metering products, Triacta's meters have been deployed by sub-metering companies, property owners, building system integrators, contractors and national distribution companies since 2003.

Contact Information

Sales: sales@triacta.com

Support: support@triacta.com

General Information: info@triacta.com

Triacta Power Solutions LP
51 Roe Street, Unit 11
Carleton Place, ON K7C 0N3
(613) 256-2868

Electrical Submeters



PowerHawk 4000 Series Electrical Submeters

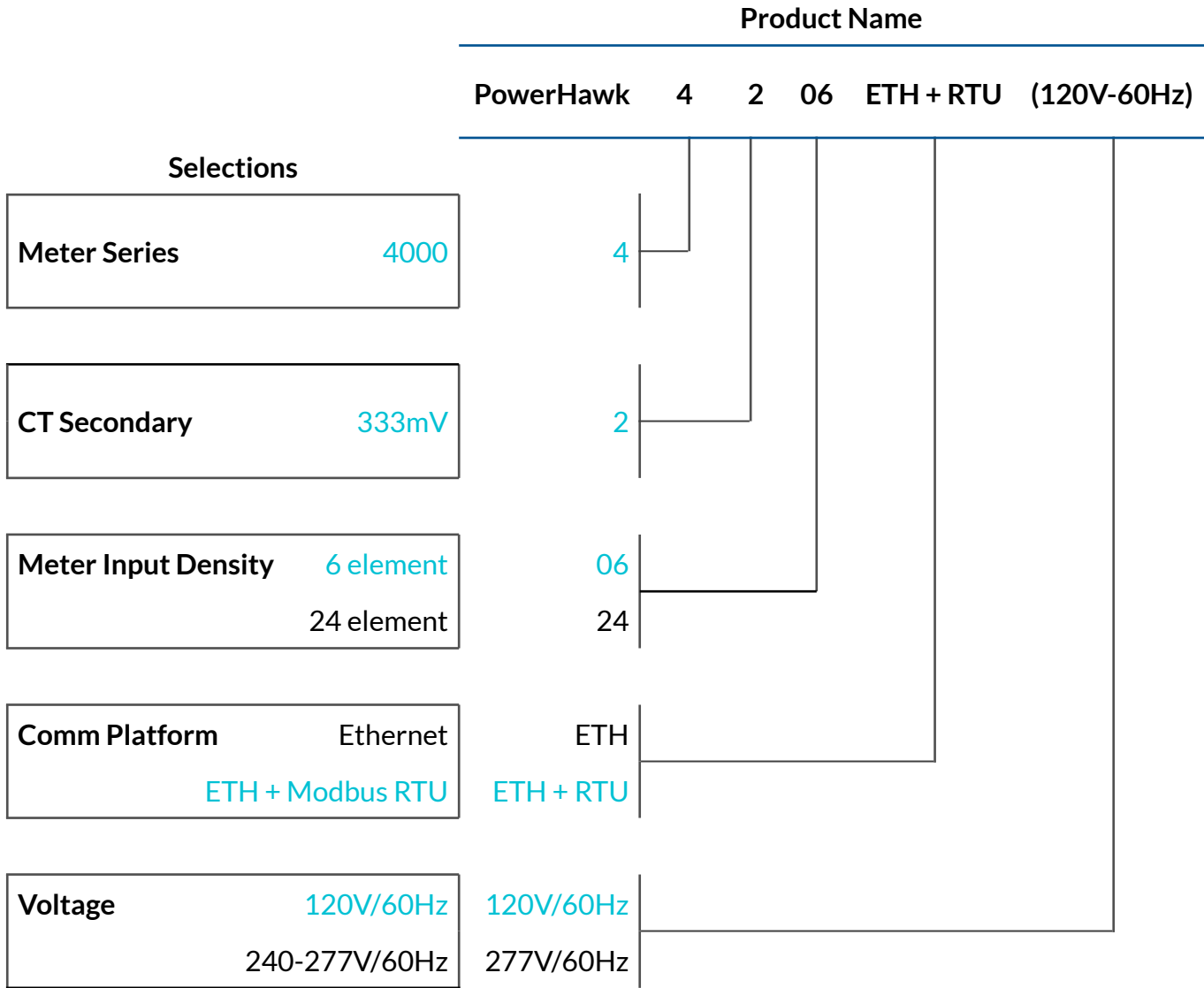
Triacta's PowerHawk 4000 Series submeter platform brings multi-channel efficiencies to energy management (EM) applications such as load monitoring/disaggregation, M&V, and BAS/EMS integration. The PowerHawk's Ethernet communication platform supports open I/P protocols including BACnet IP, MODBUS TCP/IP and offers an option to include an integrated MODBUS RTU/RS-485 module.

Triacta offers multiple variants of the 4000 Series based on the following parameters:

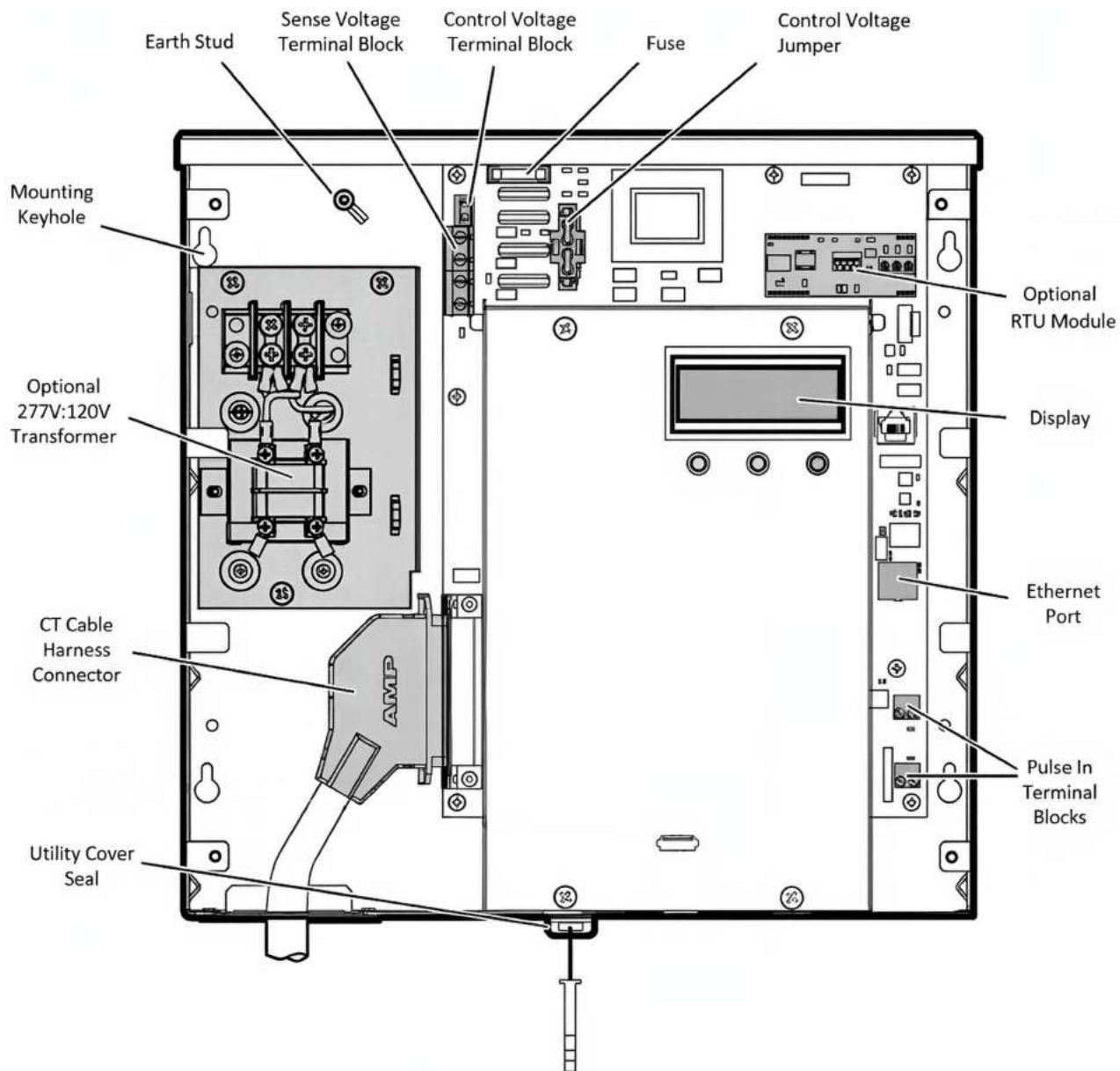
- **CT Secondary Outputs:** 333mV
- **Meter Density:** 6 or 24 electrical metering inputs/elements, two pulse inputs
- **Panel Voltage:** 120V 60Hz, 240-277V 60Hz
- **Communications Platform:** Ethernet or Ethernet + Modbus RTU
- **Configurable as** 1, 2 (network) or 3-phase meters



PowerHawk 4000 Series Selection Guide Example



PowerHawk 4000 Series Meter Primary Components



PowerHawk 4206 - 333mV

Overview

- Energy Management Grade (EM Grade)
- 333mV Split-core CTs
- 6 Electrical Inputs/Elements
- 2 Pulse Inputs
- Config: 1PH, 2PH or 3PH

Voltage Options:

- 120V, 60hz
- 240-277V, 60hz

Comm Options:

- Ethernet
- Ethernet + Modbus RTU

| Product Number | Product Name | Listings /Approvals for Revenue Applications |
|----------------|----------------------------------------------|----------------------------------------------|
| 910-136-01 | Triacta PowerHawk 4206 ETH (120V,60Hz) | None |
| 910-136-05 | Triacta PowerHawk 4206 ETH (277V,60Hz) | None |
| 910-136-01-RTU | Triacta PowerHawk 4206 ETH + RTU (120V,60Hz) | None |
| 910-136-05-RTU | Triacta PowerHawk 4206 ETH + RTU (277V,60Hz) | None |

[Download Specification Sheet](#)

PowerHawk 4224 - 333mV

Overview

- Energy Management Grade (EM Grade)
- 333mV Split-core CTs
- 24 Electrical Inputs/Elements
- 2 Pulse Inputs
- Config: 1PH, 2PH or 3PH

Voltage Options:

- 120V, 60hz
- 240-277V, 60hz

Comm Options:

- Ethernet
- Ethernet + Modbus RTU

| Product Number | Product Name | Listings /Approvals for Revenue Applications |
|----------------|--------------------------------------|----------------------------------------------|
| 910-138-01 | PowerHawk 4224 ETH (120V,60Hz) | None |
| 910-138-05 | PowerHawk 4224 ETH (277V,60Hz) | None |
| 910-138-01-RTU | PowerHawk 4224 ETH + RTU (120V,60Hz) | None |
| 910-138-05-RTU | PowerHawk 4224 ETH + RTU (277V,60Hz) | None |

[Download Specification Sheet](#)

PowerHawk 6000 Series Electrical Submeters

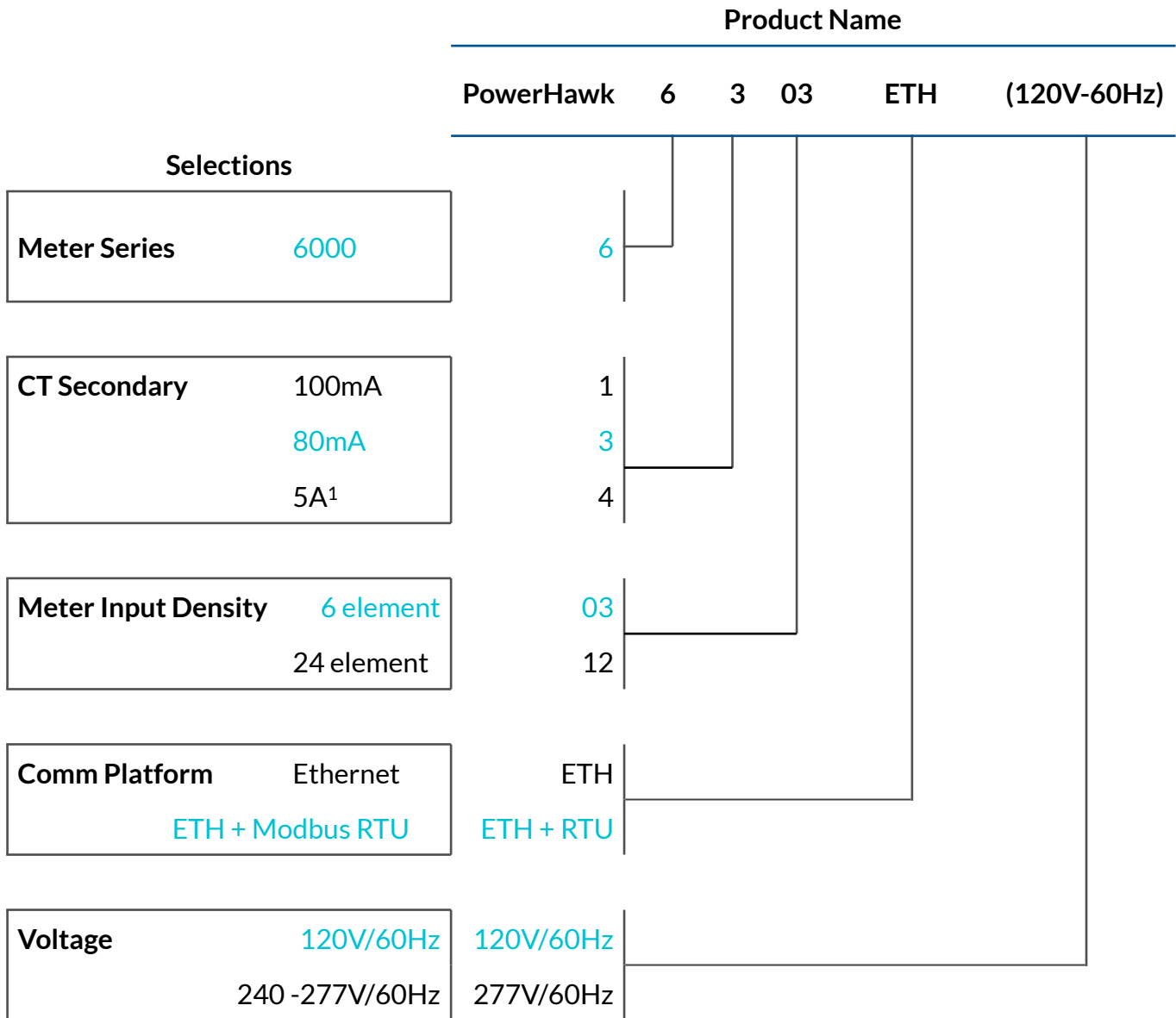
Triacta's PowerHawk 6000 Series sub-meter platform brings independently certified accuracy and multi-channel efficiencies to revenue-based applications such as tenant sub-metering, electrical consumption cost allocation and net metering for co-generated power systems. Its Ethernet communication platform supports open I/P protocols, including BACnet IP, MODBUS TCP/IP and offers an option to include an integrated MODBUS RTU/RS-485 module.

Triacta offers multiple variants of the 6000 Series based on the following parameters:

- **CT Secondary Outputs:** 100mA, 333mV, 80mA, or 5A
- **Meter Density:** 6 or 24 electrical metering inputs/elements, 2 pulse inputs
- **Panel Voltage:** 120V 60Hz, 240-277V 60Hz
- **Communications Platform:** Ethernet or Ethernet + Modbus RTU
- **Configurable as 1, 2 (network) or 3-phase meters**



PowerHawk 6000 Series Selection Guide Example

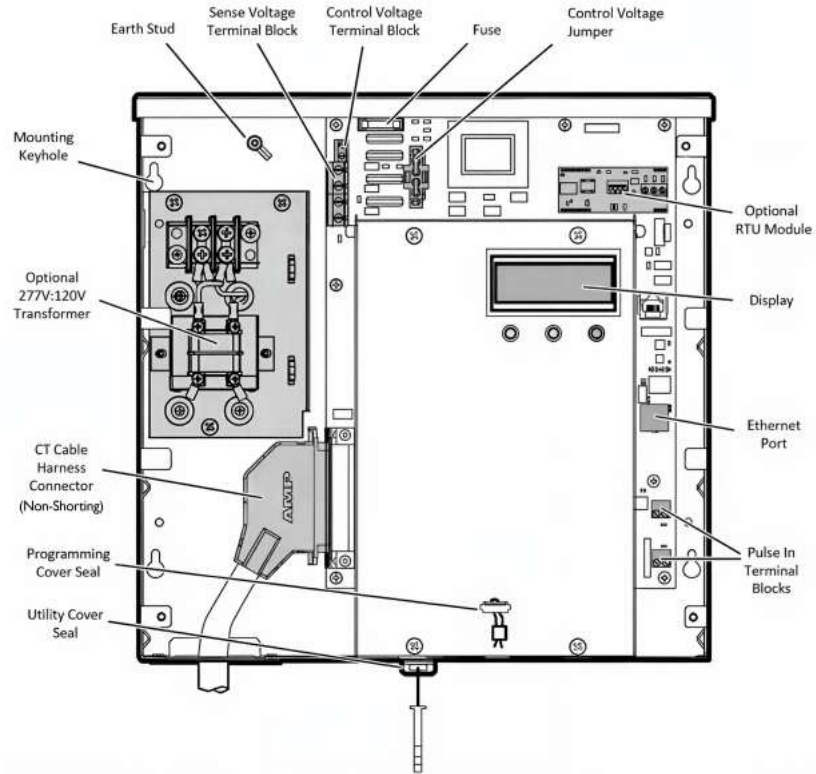


¹ 5A CT variant only available in 24-element input density for PowerHawk 6412

External 5A-80mA CT Converters (part no 900-319-01) available for PowerHawk 6312 and 6303

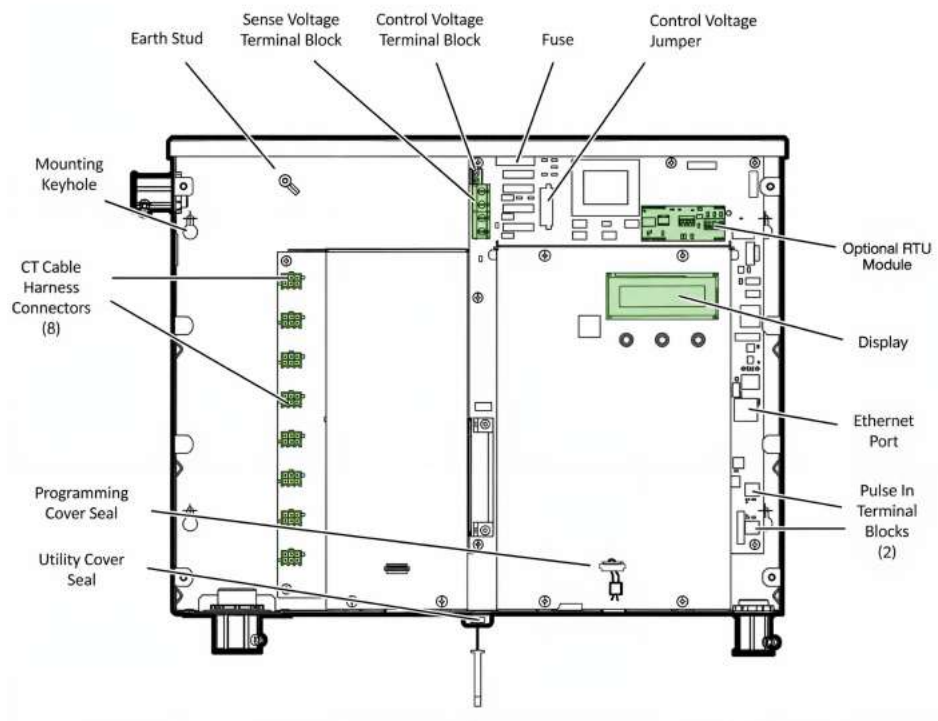
PowerHawk 6000 Series Meter Primary Components

PowerHawk 61XX and 63XX Series Meters



Note: A shorting version of the CT cable (part no 940-022-01) is also available

PowerHawk 6412 Series Meter



PowerHawk 6103 - 100 mA

Overview

- ANSI C12.20, Class 0.5
- REV-Grade
- 100mA Solid-core CTs
- 6 Electrical Inputs/Elements
- 2 Pulse Inputs
- Config: 1PH, 2PH or 3PH

Voltage Options:

- 120V, 60hz
- 240-277V, 60Hz

Comm Options:

- Ethernet
- Ethernet + Modbus RTU

| Product Number | Product Name | Listings/Approvals for Revenue Applications * |
|----------------|----------------------------------------------------|-----------------------------------------------|
| 910-140-01 | Triacta PowerHawk 6103 ETH (120V,60Hz) | MC |
| 910-140-05 | Triacta PowerHawk 6103 ETH (277V,60Hz) | MC |
| 910-140-01 RTU | Triacta PowerHawk 6103 ETH + RTU (120V,60Hz) | MC |
| 910-140-05 RTU | Triacta PowerHawk 6103 ETH + RTU (277V,60Hz) | MC |
| 910-640-01 | Triacta PowerHawk 6103 ETH (120V,60Hz) NY/MD | NYPSC, MDPSC |
| 910-640-01 RTU | Triacta PowerHawk 6103 ETH + RTU (120V,60Hz) NY/MD | NYPSC, MDPSC |

[Detailed Specification Sheet](#)

* MC- Measurement Canada, NYPSC - New York Public Service Commission, MDPSC - Maryland Public Service Commission, CDFA - California Dept of Food and Agriculture

PowerHawk 6112 - 100mA

Overview

- ANSI C12.20, Class 0.5
- REV-Grade
- 100mA Solid-core CTs
- 24 Electrical Inputs/Elements
- 2 Pulse Inputs
- Config: 1PH, 2PH or 3PH

Voltage Options:

- 120V, 60hz
- 240-277V, 60Hz

Comm Options:

- Ethernet
- Ethernet + Modbus RTU

| Product Number | Product Name | Listings/Approvals for Revenue Applications * |
|----------------|----------------------------------------------------|-----------------------------------------------|
| 910-141-01 | Triacta PowerHawk 6112 ETH (120V,60Hz) | MC |
| 910-641-01 | Triacta PowerHawk 6112 ETH (120V,60Hz) NYPSC/MD | NYPSC, MDPSC |
| 910-141-05 | Triacta PowerHawk 6112 ETH (277V,60Hz) | MC |
| 910-141-01 RTU | Triacta PowerHawk 6112 ETH + RTU (120V,60Hz) | MC |
| 910-641-01 RTU | Triacta PowerHawk 6112 ETH + RTU (120V,60Hz) NY/MD | NYPSC, MDPSC |
| 910-141-05 RTU | Triacta PowerHawk 6112 ETH + RTU (277V,60Hz) | MC |

[Detailed Specification Sheet](#)

* MC- Measurement Canada, NYPSC - New York Public Service Commission, MDPSC - Maryland Public Service Commission, CDFA - California Dept of Food and Agriculture

PowerHawk 6303 - 80 mA

Overview

- ANSI C12.20, Class 0.5
- REV-Grade
- 80mA Solid-core CTs
- 6 Electrical Inputs/Elements
- 2 Pulse Inputs
- Config: 1PH, 2PH or 3PH

Voltage Options:

- 120V, 60hz
- 240-277V, 60Hz

Comm Options:

- Ethernet
- Ethernet + Modbus RTU

| Product Number | Product Name | Listings/Approvals for Revenue Applications * |
|----------------|----------------------------------------------------|-----------------------------------------------|
| 910-125-01 | Triacta PowerHawk 6303 ETH (120V,60Hz) | MC |
| 910-725-01 | Triacta PowerHawk 6303 ETH (120V,60Hz) CA | CDFA |
| 910-625-01 | Triacta PowerHawk 6303 ETH (120V,60Hz) NY/MD | NYPSC, MDPSC |
| 910-125-05 | Triacta PowerHawk 6303 ETH (277V,60Hz) | MC |
| 910-725-05 | Triacta PowerHawk 6303 ETH (277V,60Hz) CA | CDFA |
| 910-125-01 RTU | Triacta PowerHawk 6303 ETH + RTU (120V,60Hz) | MC |
| 910-725-01 RTU | Triacta PowerHawk 6303 ETH + RTU (120V,60Hz) CA | CDFA |
| 910-625-01 RTU | Triacta PowerHawk 6303 ETH + RTU (120V,60Hz) NY/MD | NYPSC, MDPSC |
| 910-125-05 RTU | Triacta PowerHawk 6303 ETH + RTU (277V,60Hz) | MC |
| 910-725-05 RTU | Triacta PowerHawk 6303 ETH + RTU (277V,60Hz) CA | CDFA |

[Detailed Specification Sheet](#)

*MC- Measurement Canada, NY - New York Public Service Commission,
MDPSC - Maryland Public Service Commission, CDFA - California Dept of Food and Agriculture

PowerHawk 6312 - 80mA

Overview

- ANSI C12.20, Class 0.5
- REV-Grade
- 80mA Solid-core CTs
- 24 Electrical Inputs/Elements
- 2 Pulse Inputs
- Config: 1PH, 2PH or 3PH

Voltage Options:

- 120V, 60hz
- 240-277V, 60Hz

Comm Options:

- Ethernet
- Ethernet + Modbus RTU

| Product Number | Product Name | Listings/Approvals for Revenue Applications * |
|----------------|----------------------------------------------------|-----------------------------------------------|
| 910-133-01 | Triacta PowerHawk 6312 ETH (120V,60Hz) | MC |
| 910-133-01 RTU | Triacta PowerHawk 6312 ETH + RTU (120V,60Hz) | MC |
| 910-133-05 | Triacta PowerHawk 6312 ETH (277V,60Hz) | MC |
| 910-133-05 RTU | Triacta PowerHawk 6312 ETH + RTU (277V,60Hz) | MC |
| 910-633-01 | Triacta PowerHawk 6312 ETH (120V,60Hz) NY/MD | NYPSC, MDPSC |
| 910-633-01 RTU | Triacta PowerHawk 6312 ETH + RTU (120V,60Hz) NY/MD | NYPSC, MDPSC |
| 910-733-01 | Triacta PowerHawk 6312 ETH (120V,60Hz) CA | CDFA |
| 910-733-01 RTU | Triacta PowerHawk 6312 ETH + RTU (120V,60Hz) CA | CDFA |
| 910-733-05 | Triacta PowerHawk 6312 ETH (277V,60Hz) CA | CDFA |
| 910-733-05 RTU | Triacta PowerHawk 6312 ETH + RTU (277V,60Hz) CA | CDFA |

[Detailed Specification Sheet](#)

*MC- Measurement Canada, NYPSC - New York Public Service Commission,
MDPSC - Maryland Public Service Commission, CDFA - California Dept of Food and Agriculture

PowerHawk 6412 - 5A

Overview

- ANSI C12.20, Class 0.5
- REV-Grade
- 5Amp CTs
- 24 Electrical Inputs/Elements
- 2 Pulse Inputs
- Config: 1PH, 2PH or 3PH

Voltage Options:

- 120V, 60hz
- 240-277V, 60Hz

Comm Options:

- Ethernet
- Ethernet + Modbus RTU

| Product Number | Product Name | Listings/Approvals for Revenue Applications* |
|----------------|----------------------------------------------|----------------------------------------------|
| 910-135-01 | Triacta PowerHawk 6412 ETH (120V,60Hz) | MC |
| 910-135-05 | Triacta PowerHawk 6412 ETH (277V,60Hz) | MC |
| 910-135-01-RTU | Triacta PowerHawk 6412 ETH + RTU (120V,60Hz) | MC |
| 910-135-05-RTU | Triacta PowerHawk 6412 ETH + RTU (277V,60Hz) | MC |

Detailed Specification Sheet

*MC- Measurement Canada, NYPSC - New York Public Service Commission, MDPSC - Maryland Public Service Commission, CDFA - California Dept of Food and Agriculture

Triacta GATEWAY™ Multipoint Submeters

Triacta GATEWAY™ systems are modular, high-density electrical meters and pulse collectors designed for measurement and verification (M&V), energy management, tenant billing, and building control applications. They combine best-in-class metrology with a powerful computing foundation and IoT networking techniques, making them both accurate and easy to deploy. Triacta GATEWAY systems integrate with legacy building automation protocols as well as IoT-oriented networks. This flexibility allows them to seamlessly deliver building information to cloud-centric or server-based systems, making advanced building controls and M&V practical for both new builds and retrofits—particularly in the sub-50,000-square-foot market.

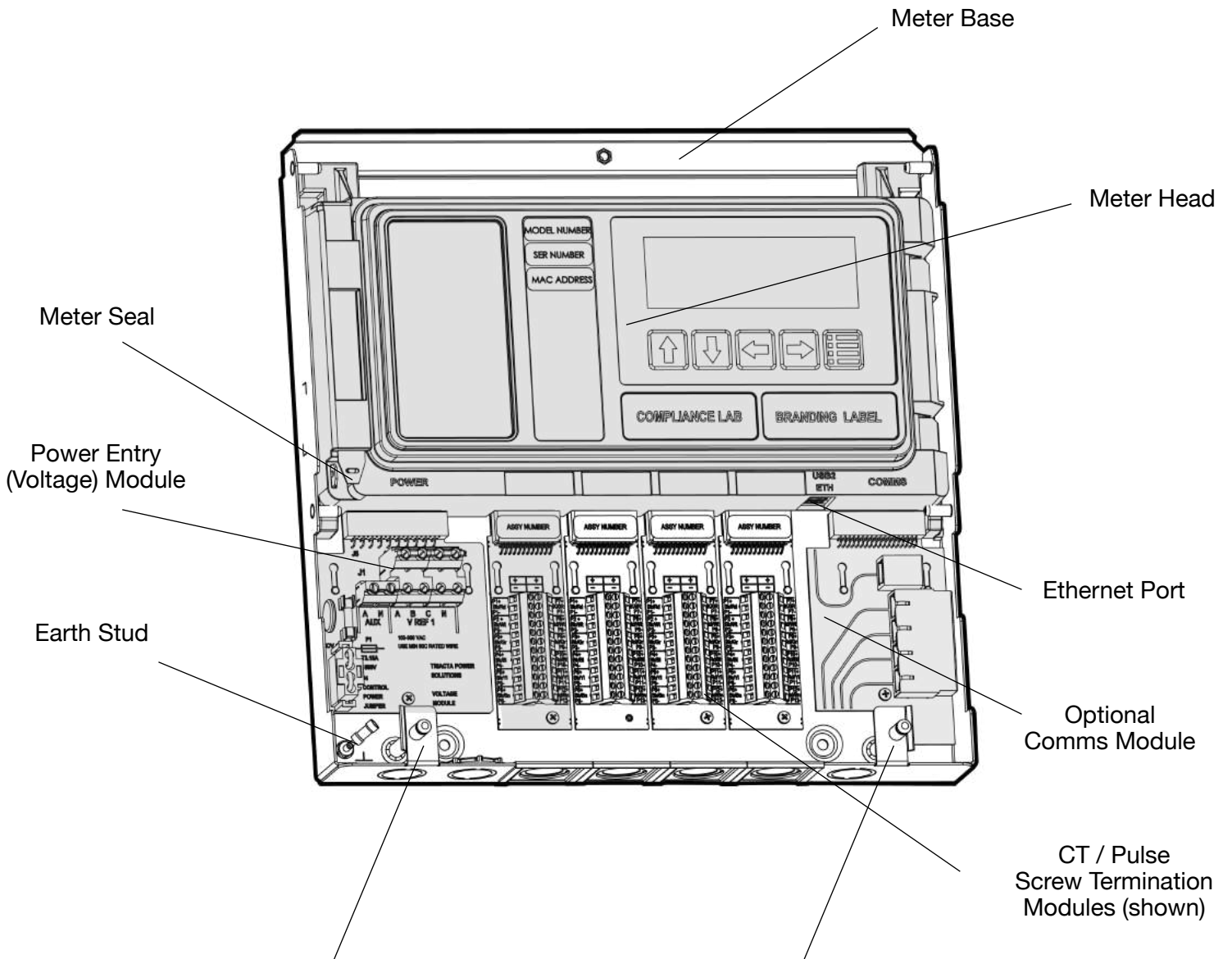


Key Triacta GATEWAY features include:

- Accommodates 80mA, 100mA or 333mV CT types
- Up to 48 electrical elements in any combination 1, 2 (network), or 3-phase meters
- Supports a combination of electrical (CT) and Form A pulse input modules (4 modules, 48 inputs total)
- Single or dual reference voltages selectable on a per meter point basis (120/240V, 120/208V, 240/416V, 277/480V)
- Flexible, phase-programmable assignment of input and voltage reference to each meter point
- Ethernet communications with native BACnet IP, Modbus TCP/IP and secure FTPS homing AMR
- Multi-homing for reporting to multiple services
- Browser-based programming interface, built-in web page for local meter point/pulse reading and built-in WiFi access point for easy and direct communication from a tablet, smartphone, laptop, or network
- Integrated self-shorting CT termination modules
- 4-quadrant meter measures total and per phase:
 - Active, Reactive & Apparent Power
 - Peak W and VA Demand
 - PF and phase angles
 - Irms, Vrms
- Innovative 2-part design with separate Meter Head and Meter Base for easy and flexible installation
- Field-upgradeable system software



Triacta GATEWAY Meter Primary Components

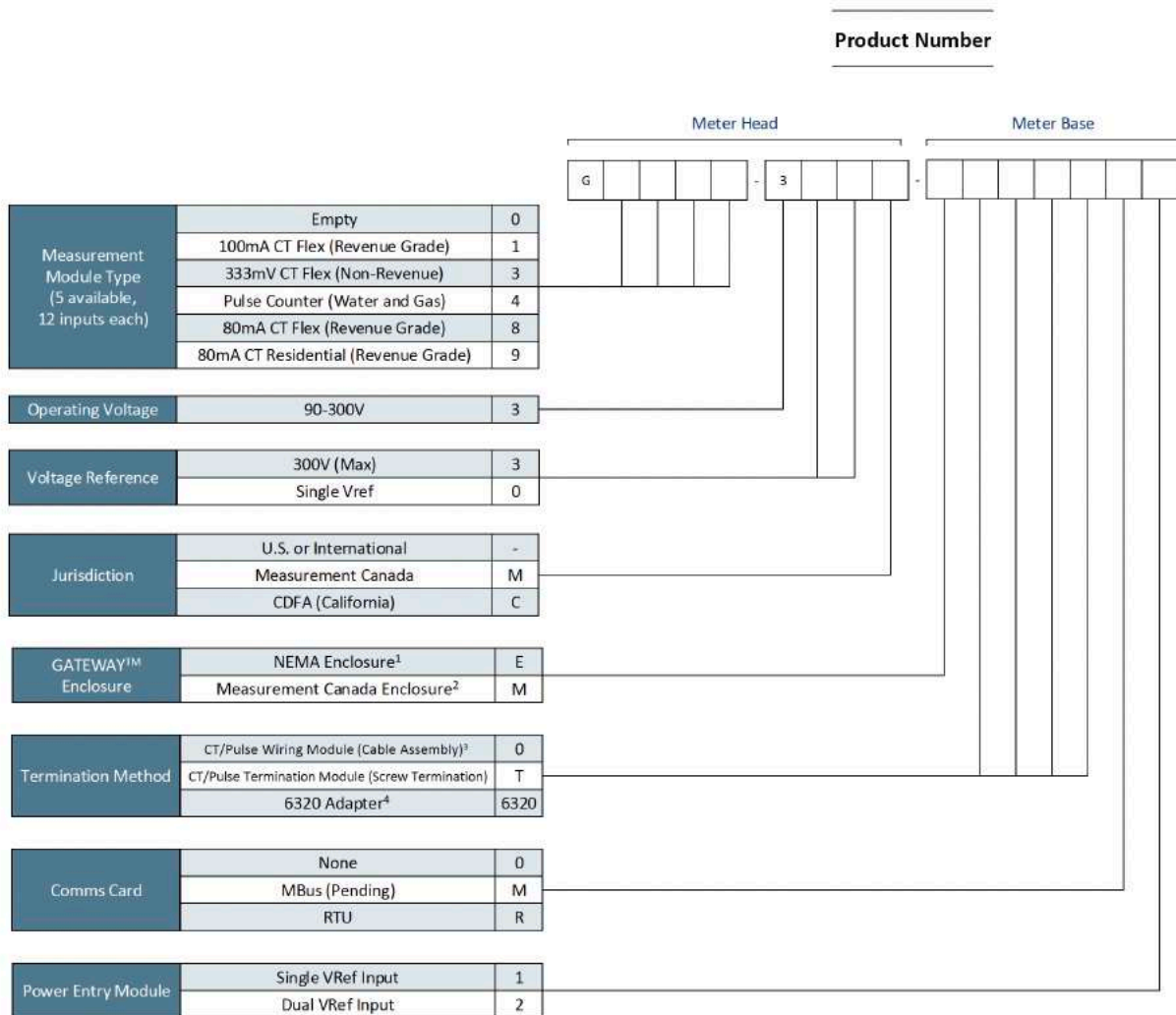


"Security Studs" on Measurement Canada Variant of Base Only (Shown)

Triacta GATEWAY Series Selection Guide

Triacta offers multiple variants of the GATEWAY Series based on the following parameters

- **CT Secondary Type (80mA, 100mA, 333mV) or Pulse Input** assigned per module (total of 4 modules)
- **Auxiliary Voltage (Control Power):** 90V-300V
- **Reference Voltage (Vref):** 300V maximum, single or dual reference
- **Jurisdiction** (Regulatory Approval)
- **Enclosure Type**
- **CT Termination Form by Module:** Self-Shorting Integrated Cable Assembly or Screw Termination
- **Communication Module Type**
- **Power Entry Module Form:** 1 Reference Voltage, 2 Reference Voltage



1. For Measurement Canada applications using the CT/Pulse Wiring Module (Cable Assembly PN 911-244-01) select the NEMA Enclosure.
2. For Measurement Canada applications using type T CT/Pulse Termination Module (Screw Termination) select the Measurement Canada Enclosure.
3. CT/Pulse Wiring Module (Cable Assembly PN 911-244-01) to be bought separately.
4. For PowerHawk 6320 replacement applications.

Triacta GATEWAY Series Ordering Notes

Meter Head, Meter Base and Cable Assemblies are Sold Separately

This facilitates a 2-stage deployment of the meter system. The Meter Base and CTs may be installed during the building construction phase. The Meter Head can be configured, sealed, and installed as a building is being occupied. For "sealed" applications, this serves to maximize the time a sealed Meter Head is in the field. It also simplifies meter reverification as only the Meter Head need be removed.

Ordering Example

To order a 36-element G8880 with screw-down terminations, the combined product number is G8880-333 - ETTT02.

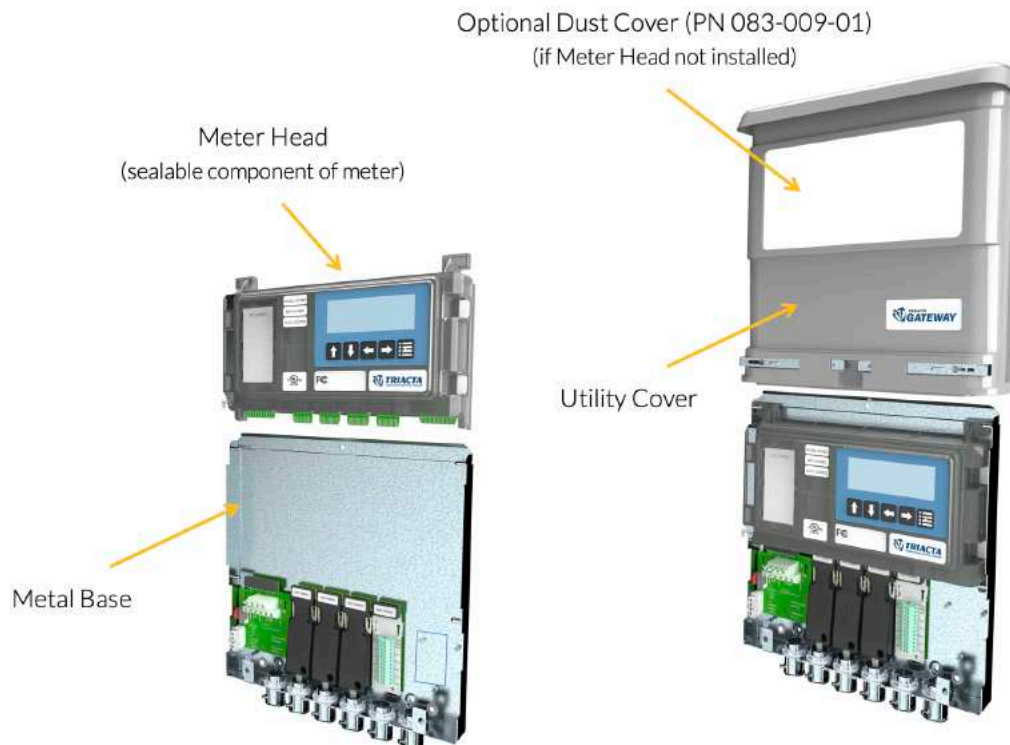
The Purchase Order line items are:

- Qty=1 G8880-333 GATEWAY METER HEAD G8880
- Qty=1 ETTT002 GATEWAY Utility Base ETTT002

To order a 36 Element G8880 with CT Cables the line items are:

- Qty=1 G8880-333 GATEWAY METER HEAD G8880
- Qty=1 E000002 GATEWAY UTILITY BASE E00002
- Qty=3 911-244-01 CABLE ASSY INTEGRATED SHORTING CONNECTOR - 4 Meter-RoHS

Triacta GATEWAY Meter Components



Triacta GATEWAY G1000 Series - 100mA

G1000 Series - supports 100mA solid-core CTs or a combination of 100mA CTs and Pulse Inputs. Targeted at general multi-point energy metering applications in non-regulated markets.

Note: A G1000C "CDFA-Approved" product is also available. Contact your sales representative for details.

| Overview | Product Number (Meter Head - Meter Base) | Product Name | Configuration | | Listings/ Approvals for Revenue Applications | |
|------------------------------------------------------------------------------------------------------------------------------------------------------------------------------------------------------------------------------------------------------------------------------------------------------------------------------------------------------------------------------------------------------------------------------------------------------------|--------------------------------------------------------|----------------------------------------|----------------------------------------|----------------------------------------|-------------------------------------------------------|------|
| | | | Meter Head - Elements - | Meter Base - Termination - | | |
| <ul style="list-style-type: none"> - ANSI C12.20, Class 0.5 - REV-Grade - 100mA Solid-core CTs - 12, 24, 36, or 48 Electrical Inputs/Elements - Flex-Phase Config - Self-Shorting CT Terminations <p>Voltage Options:</p> <ul style="list-style-type: none"> - 2 VRef, 300V max <p>Comm Options:</p> <ul style="list-style-type: none"> - Ethernet | G1000-333-ET00002 | Triacta GATEWAY Meter Assembly 1000-2T | 12 | Screwdown | None | |
| | G1100-333-ETT0002 | Triacta GATEWAY Meter Assembly 1100-2T | 24 | Screwdown | None | |
| | G1110-333-ETTT002 | Triacta GATEWAY Meter Assembly 1110-2T | 36 | Screwdown | None | |
| | G1111-333-ETTTT02 | Triacta GATEWAY Meter Assembly 1111-2T | 48 | Screwdown | None | |
| | G1000-333-E000002 | Triacta GATEWAY Meter Assembly 1000-2C | 12 | CT Cable | None | |
| | G1100-333-E000002 | Triacta GATEWAY Meter Assembly 1100-2C | 24 | CT Cable | None | |
| | G1110-333-E000002 | Triacta GATEWAY Meter Assembly 1110-2C | 36 | CT Cable | None | |
| | G1111-333-E000002 | Triacta GATEWAY Meter Assembly 1111-2C | 48 | CT Cable | None | |
| | Combination Electrical/ Pulse Input Example | G1104-333-ETT0T02 | Triacta GATEWAY Meter Assembly 1104-2T | 24 Electrical Elements/12 Pulse Inputs | Screwdown | None |

[Detailed Specification Sheet](#)

Triacta GATEWAY G3000 Series - 333mV

G3000 Series - supports 333mV split-core CTs or a combination of 333mV CTs and Pulse Inputs. Targeted at general multi-point energy monitoring applications.

| Product Number (Meter Head - Meter Base) | Product Name | Configuration | | Listings/ Approvals for Revenue Applications |
|------------------------------------------------|----------------------------------------|----------------------------|-------------------------------|-------------------------------------------------------|
| | | Meter Head - Elements - | Meter Base - Termination - | |
| G3000-333-ET00002 | Triacta GATEWAY Meter Assembly 3000-2T | 12 | Screwdown | None |
| G3300-333-ETT0002 | Triacta GATEWAY Meter Assembly 3300-2T | 24 | Screwdown | None |
| G3330-333-ETTT002 | Triacta GATEWAY Meter Assembly 3330-2T | 36 | Screwdown | None |
| G3333-333-ETTTT02 | Triacta GATEWAY Meter Assembly 3333-2T | 48 | Screwdown | None |
| G3000-333-E000002 | Triacta GATEWAY Meter Assembly 3000-2C | 12 | CT Cable | None |
| G3300-333-E000002 | Triacta GATEWAY Meter Assembly 3300-2C | 24 | CT Cable | None |
| G3330-333-E000002 | Triacta GATEWAY Meter Assembly 3330-2C | 36 | CT Cable | None |
| G3333-333-E000002 | Triacta GATEWAY Meter Assembly 3333-2C | 48 | CT Cable | None |

Overview

- Non-REV-Grade
- 333 mV Split-core CTs
- 12, 24, 36, or 48 Electrical Inputs/Elements
- Flex-Phase Config
- Self-Shorting CT Terminations

Voltage Options:

- 2 VRef, 300V max

Comm Options:

- Ethernet

Combination Electrical/ Pulse Input Example

| | | | | |
|-------------------|----------------------------------------|----------------------------------------|-----------|------|
| G3344-333-ETTTT02 | Triacta GATEWAY Meter Assembly 3344-2T | 24 Electrical Elements/24 Pulse Inputs | Screwdown | None |
|-------------------|----------------------------------------|----------------------------------------|-----------|------|

Detailed Specification Sheet

Triacta GATEWAY G4000 Series - Pulse Input

G4000 Series - supports Form A Pulse Inputs. Targeted at multi-point Electrical, Gas or Water meter reading (pulse collector) applications. Measurement Canada (MC) approved for Electrical or Gas billing applications.

| Product Number (Meter Head - Meter Base) | Product Name | Configuration | | Listings/ Approvals for Revenue Applications * |
|---------------------------------------------|--------------------------------------------------|--------------------------------|-------------------------------|---------------------------------------------------------|
| | | Meter Head - Pulse Inputs - | Meter Base - Termination - | |
| G0004-333-E000T02 | Triacta GATEWAY Pulse Collector Assembly 0004-2T | 12 | Screwdown | MC |
| G0044-333-E00TT02 | Triacta GATEWAY Pulse Collector Assembly 0044-2T | 24 | Screwdown | MC |
| G0444-333-E0TTT02 | Triacta GATEWAY Pulse Collector Assembly 0444-2T | 36 | Screwdown | MC |
| G4444-333-ETTTT02 | Triacta GATEWAY Pulse Collector Assembly 4444-2T | 48 | Screwdown | MC |
| G0004-333-E000002 | Triacta GATEWAY Pulse Collector Assembly 0004-2C | 12 | CT Cable | MC |
| G0044-333-E000002 | Triacta GATEWAY Pulse Collector Assembly 0044-2C | 24 | CT Cable | MC |
| G0444-333-E000002 | Triacta GATEWAY Pulse Collector Assembly 0444-2C | 36 | CT Cable | MC |
| G4444-333-E000002 | Triacta GATEWAY Pulse Collector Assembly 4444-2C | 48 | CT Cable | MC |

*MC- Measurement Canada

[Detailed Specification Sheet](#)

Triacta GATEWAY G8000 Series - 80mA General Use

G8000 Series - supports 80mA solid-core CTs or a combination of 80mA CTs and Pulse Inputs. Targeted at general multi-point energy metering applications in non-regulated markets.

| Product Number (Meter Head - Meter Base) | Product Name | Configuration | | Listings/ Approvals for Revenue Applications |
|------------------------------------------------|-------------------------------------------|----------------------------|-------------------------------|-------------------------------------------------------|
| | | Meter Head - Elements - | Meter Base - Termination - | |
| G8000-333 - ET00002 | Triacta GATEWAY Meter Assembly 8000-2T | 12 | Screwdown | None |
| G8800-333 - ETT0002 | Triacta GATEWAY Meter Assembly 8800-2T | 24 | Screwdown | None |
| G8880-333 - ETTT002 | Triacta GATEWAY Meter Assembly 8880-2T | 36 | Screwdown | None |
| G8888-333 - ETTTT02 | Triacta GATEWAY Meter Assembly 8888-2T | 48 | Screwdown | None |
| G8000-333 - E000002 | Triacta GATEWAY Meter Assembly 8000-2C | 12 | CT Cable | None |
| G8800-333 - E000002 | Triacta GATEWAY Meter Assembly 8800-2C | 24 | CT Cable | None |
| G8880-333 - E000002 | Triacta GATEWAY Meter Assembly 8880-2C | 36 | CT Cable | None |
| G8888-333 - E000002 | Triacta GATEWAY Meter Assembly 8888-2C | 48 | CT Cable | None |

Overview

- ANSI C12.20, Class 0.5
- REV-Grade
- 80mA Solid-core CTs
- 12, 24, 36, or 48 Electrical Inputs/Elements
- Flex-Phase Config
- Self-Shorting CT Terminations

Voltage Options:

- 2 VRef, 300V max

Comm Options:

- Ethernet

Combination Electrical/ Pulse Input Example

| | | | | |
|------------------------|-------------------------------------------|----------------------------------------------|-----------|------|
| G8804-333 - ETT0T02 | Triacta GATEWAY Meter Assembly 8804-2T | 24 Electrical Elements/12 Pulse Inputs | Screwdown | None |
|------------------------|-------------------------------------------|----------------------------------------------|-----------|------|

[Detailed Specification Sheet](#)

Triacta GATEWAY 8000C Series – 80mA California

G8000C Series - supports 80mA solid-core CTs or a combination of 80mA CTs and Pulse Inputs. California (CDFA) approved for billing applications.

| Product Number (Meter Head - Meter Base) | Product Name | Configuration | | Listings/ Approvals for Revenue Applications * |
|------------------------------------------------|--------------------------------------------|----------------------------|-------------------------------|---------------------------------------------------------|
| | | Meter Head - Elements - | Meter Base - Termination - | |
| G8000-333C - ET00002 | Triacta GATEWAY Meter Assembly 8000C-2T | 12 | Screwdown | CDFA |
| G8800-333C - ETT0002 | Triacta GATEWAY Meter Assembly 8800C-2T | 24 | Screwdown | CDFA |
| G8880-333C - ETTT002 | Triacta GATEWAY Meter Assembly 8880C-2T | 36 | Screwdown | CDFA |
| G8888-333C - ETTTT02 | Triacta GATEWAY Meter Assembly 8888C-2T | 48 | Screwdown | CDFA |
| G8000-333C - E000002 | Triacta GATEWAY Meter Assembly 8000C-2C | 12 | CT Cable | CDFA |
| G8800-333C - E000002 | Triacta GATEWAY Meter Assembly 8800C-2C | 24 | CT Cable | CDFA |
| G8880-333C - E000002 | Triacta GATEWAY Meter Assembly 8880C-2C | 36 | CT Cable | CDFA |
| G8888-333C - E000002 | Triacta GATEWAY Meter Assembly 8888C-2C | 48 | CT Cable | CDFA |

* CDFA - California Dept of Food and Agriculture

Combination Electrical/ Pulse Input Example

| | | | | |
|-------------------------|--------------------------------------------|----------------------------------------------|-----------|------|
| G8844-333C - ETTTT02 | Triacta GATEWAY Meter Assembly 8844C-2T | 24 Electrical Elements/24 Pulse Inputs | Screwdown | CDFA |
|-------------------------|--------------------------------------------|----------------------------------------------|-----------|------|

Detailed Specification Sheet

Triacta GATEWAY 8000M Series – 80mA Measurement Canada

G8000M Series - supports 80mA solid-core CTs or a combination of 80mA CTs and Pulse Inputs. Measurement Canada (MC) approved for residential and demand billing applications.

| Overview | Product Number (Meter Head - Meter Base) | Product Name | Configuration | | Listings/ Approvals for Revenue Applications * |
|-----------------------------------------------------------------------------------------------------------------------------------------------------------------------------------------------------------------------------------------------------------------------------------------------------------------------------------------------------------------------------------------------------------------------------------------------------------|---------------------------------------------|-----------------------------------------|----------------------------|-------------------------------|---------------------------------------------------------|
| | | | Meter Head - Elements - | Meter Base - Termination - | |
| <ul style="list-style-type: none"> - ANSI C12.20, Class 0.5 - REV-Grade - 80mA Solid-core CTs - 12, 24, 36, or 48 Electrical Inputs/Elements - Flex-Phase Config - Self-Shorting CT Terminations <p>Voltage Options:</p> <ul style="list-style-type: none"> - 2 VRef, 300V max <p>Comm Options:</p> <ul style="list-style-type: none"> - Ethernet | G8000-333M - MT00002 | Triacta GATEWAY Meter Assembly 8000M-2T | 12 | Screwdown | MC |
| | G8800-333M - MTT0002 | Triacta GATEWAY Meter Assembly 8800M-2T | 24 | Screwdown | MC |
| | G8880-333M - MTTT002 | Triacta GATEWAY Meter Assembly 8880M-2T | 36 | Screwdown | MC |
| | G8888-333M - MTTTT02 | Triacta GATEWAY Meter Assembly 8888M-2T | 48 | Screwdown | MC |
| | G8000-333M - E000002 | Triacta GATEWAY Meter Assembly 8000M-2C | 12 | CT Cable | MC |
| | G8800-333M - E000002 | Triacta GATEWAY Meter Assembly 8800M-2C | 24 | CT Cable | MC |
| | G8880-333M - E000002 | Triacta GATEWAY Meter Assembly 8880M-2C | 36 | CT Cable | MC |
| | G8888-333M - E000002 | Triacta GATEWAY Meter Assembly 8888M-2C | 48 | CT Cable | MC |

*MC- Measurement Canada

| | | | | | |
|--------------------------------------------------------|----------------------|-----------------------------------------|----------------------------------------|-----------|----|
| Combination Electrical/ Pulse Input Example | G8804-333M - MTTOT02 | Triacta GATEWAY Meter Assembly 8804M-2T | 24 Electrical Elements/12 Pulse Inputs | Screwdown | MC |
|--------------------------------------------------------|----------------------|-----------------------------------------|----------------------------------------|-----------|----|

[Detailed Specification Sheet](#)

Triacta GATEWAY 9000M Series – 80mA MC Residential

G9000M Series - supports 80mA solid-core CTs or a combination of 80mA CTs and Pulse Inputs. Measurement Canada (MC) approved for residential single phase and 2ph (network) applications.

Overview

- ANSI C12.20, Class 0.5
- REV-Grade
- 80mA Solid-core CTs
- 12, 24, 36, or 48 Electrical Inputs/Elements
- Flex-Phase Config
- Self-Shorting CT Terminations

Voltage Options:

- 2 VRef, 300V max

Comm Options:

- Ethernet

| Product Number (Meter Head - Meter Base) | Product Name | Configuration | | Listings/ Approvals for Revenue Applications * |
|---------------------------------------------|-----------------------------------------|-------------------------|----------------------------|------------------------------------------------|
| | | Meter Head - Elements - | Meter Base - Termination - | |
| G9000-333M - MT00002 | Triacta GATEWAY Meter Assembly 9000M-2T | 12 | Screwdown | MC |
| G9900-333M - MTT0002 | Triacta GATEWAY Meter Assembly 9900M-2T | 24 | Screwdown | MC |
| G9990-333M - MTTT002 | Triacta GATEWAY Meter Assembly 9990M-2T | 36 | Screwdown | MC |
| G9999-333M - MTTTT02 | Triacta GATEWAY Meter Assembly 9999M-2T | 48 | Screwdown | MC |
| G9000-333M - E000002 | Triacta GATEWAY Meter Assembly 9000M-2C | 12 | CT Cable | MC |
| G9900-333M - E000002 | Triacta GATEWAY Meter Assembly 9900M-2C | 24 | CT Cable | MC |
| G9990-333M - E000002 | Triacta GATEWAY Meter Assembly 9990M-2C | 36 | CT Cable | MC |
| G9999-333M - E000002 | Triacta GATEWAY Meter Assembly 9999M-2C | 48 | CT Cable | MC |

*MC- Measurement Canada

Combination Electrical/ Pulse Input Example

| | | | | |
|----------------------|-----------------------------------------|----------------------------------------|-----------|----|
| G9944-333M - MTTTT02 | Triacta GATEWAY Meter Assembly 9944M-2T | 24 Electrical Elements/24 Pulse Inputs | Screwdown | MC |
|----------------------|-----------------------------------------|----------------------------------------|-----------|----|

Detailed Specification Sheet

Triacta GATEWAY-S™

The Triacta GATEWAY-S is an ANSI C12.20, Class 0.5 high-density REV grade electric meter with a single VRef (600V max) in a lockable, sealable enclosure. The GATEWAY-S supports a single GATEWAY Meter Module for up to 12 self-shortening electrical inputs or 12 pulse inputs.

The GATEWAY-S supports Ethernet communications with native BACnet IP, Modbus TCP/IP and secure FTPS multi-homing AMR. The GATEWAY-S has a WiFi interface for local monitoring and configuration.

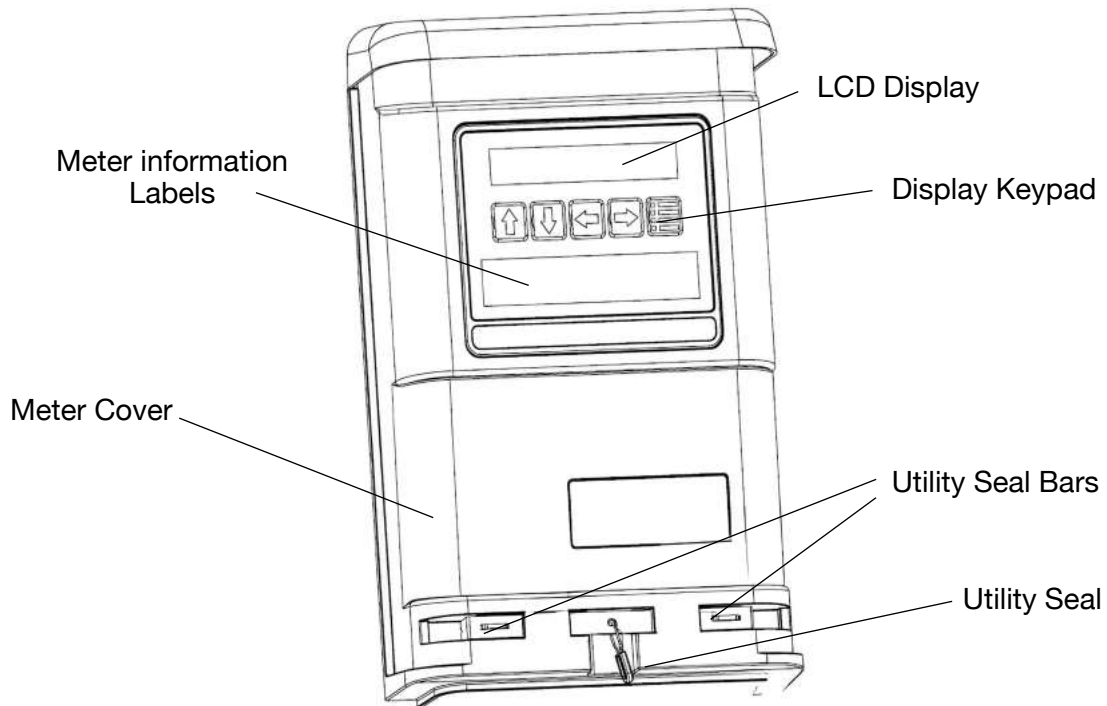
Key Triacta GATEWAY-S features include:

- Revenue-grade (billing-ready, sealable, reliable)
- Any mix of 1-phase, 2-phase (network), 3-phase electrical metering for up to 12 CT inputs, or 12 Form A Contact Closure pulse inputs
- Supports 80mA/100mA/333mV CTs
- 4-quadrant meter measures total and per phase:
 - Active, Reactive & Apparent Power
 - Peak W and VA Demand
 - PF and phase angles
 - Irms, Vrms
- Single service voltage up to 347/600V
- On-board Web server and 2x20 Liquid Crystal Display for local readings
- Multi-homing for reporting to multiple management services
- Same innovative, 2-part meter and meter base design as regular GATEWAY meters for easy and flexible installation
- Integrated self-shortening CT connection modules
- WiFi Access Point
- Cloud-based meter management
- Field-upgradeable system software

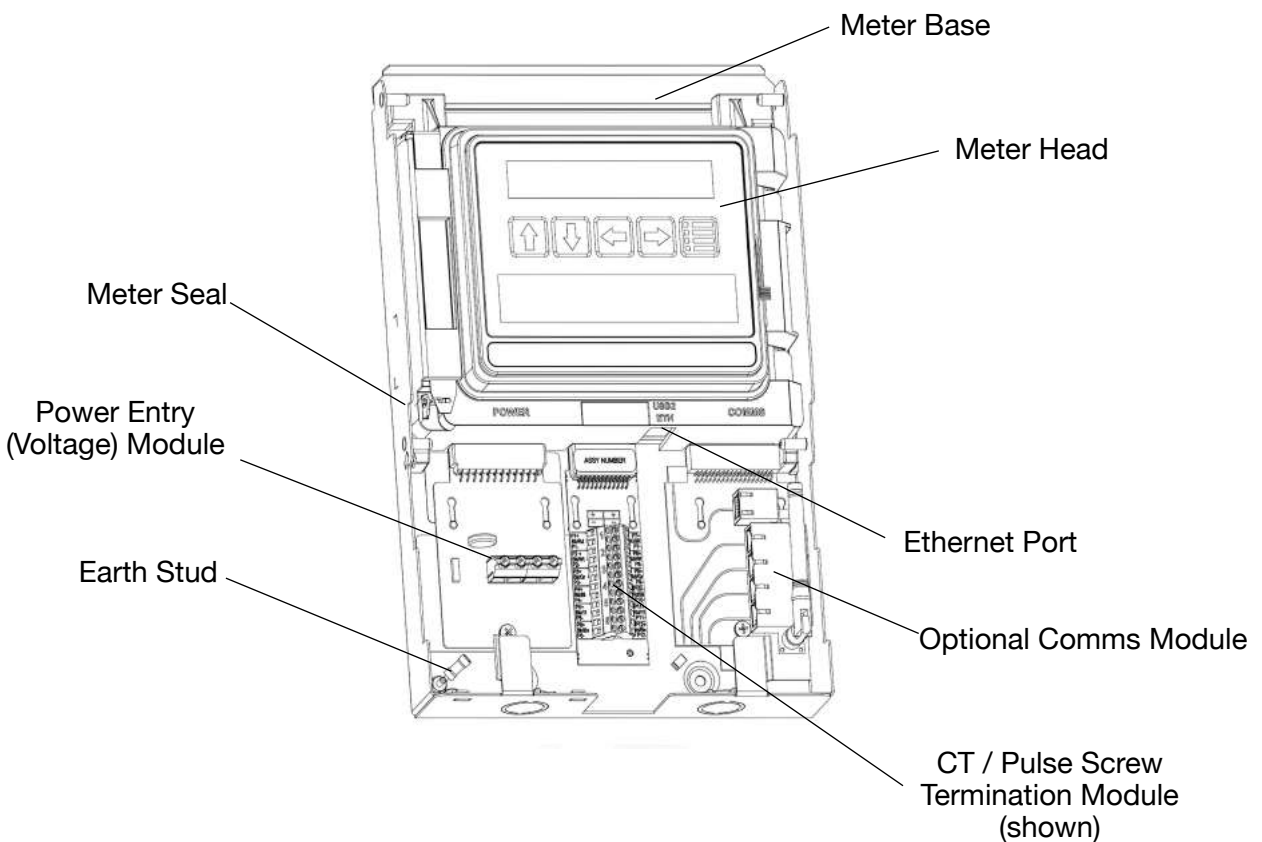


Triacta GATEWAY-S Meter Primary Components

TRIACTA GATEWAY-S External View



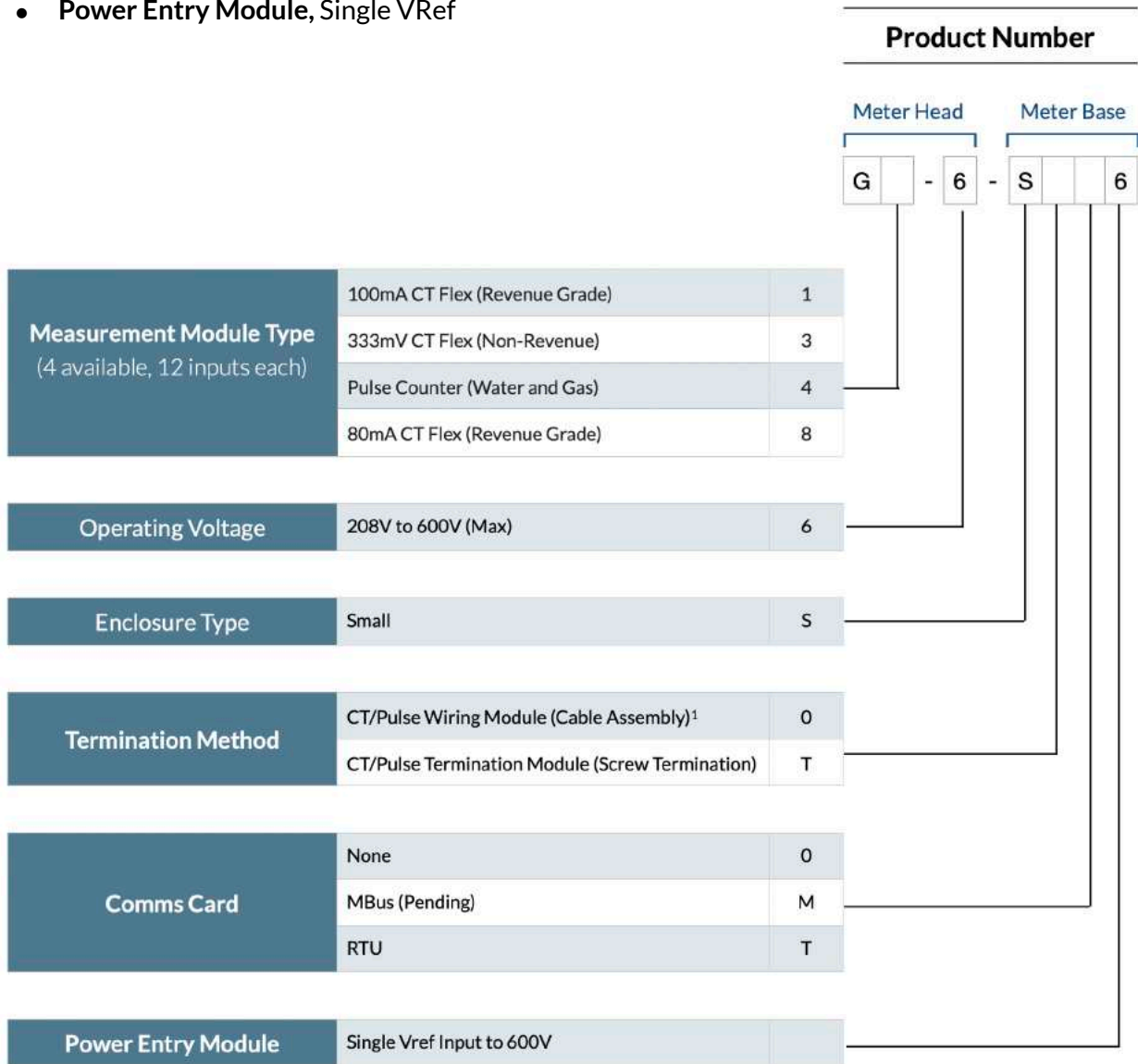
TRIACTA GATEWAY-S Internal View



Triacta GATEWAY-S Series Selection Guide

Triacta offers multiple variants of the GATEWAY-S Series based on the following parameters

- **CT Secondary Type (80mA, 100mA, 333mV) or Pulse Input based on module type**
- **Operating Voltage 208 to 600V, No AUX power**
- **Small Enclosure Type, single Meter Module**
- **CT Termination Form by Module: Self-Shorting Integrated Cable Assembly or Screw Termination**
- **Communications Module Type**
- **Power Entry Module, Single VRef**



1. CT/Pulse Wiring Module (Cable Assembly PN 911-244-01) to be bought separately.

Triacta GATEWAY-S

Overview

- ANSI C12.20, Class 0.5
- REV-Grade
- 80mA, 100mA, 333mV CTs
- 12 Electrical Inputs/ Elements or 12 Pulse Inputs
- Flex-Phase Config
- Self-Shorting CT Terminations

Voltage Options:

- Single Vref, 600V Max

Comm Options:

- Ethernet

| Product Number (Meter Head - Meter Base) | Product Name | Configuration | | Listings/ Approvals for Revenue Applications * |
|---------------------------------------------|----------------------|-------------------------|----------------------------|------------------------------------------------|
| | | Meter Head - Elements - | Meter Base - Termination - | |
| G1-6-ST06 | Triacta GATEWAY-S-1T | 12 | Screwdown | None |
| G1-6-S006 | Triacta GATEWAY-S-1C | 12 | CT Cable | None |
| G3-6-ST06 | Triacta GATEWAY-S-3T | 12 | Screwdown | None |
| G3-6-S006 | Triacta GATEWAY-S-3C | 12 | CT Cable | None |
| G4-6-ST06 | Triacta GATEWAY-S-4T | 12 Pulse Inputs | Screwdown | MC |
| G4-6-S006 | Triacta GATEWAY-S-4C | 12 Pulse Inputs | CT Cable | MC |
| G8-6-ST06 | Triacta GATEWAY-S-8T | 12 | Screwdown | MC |
| G8-6-S006 | Triacta GATEWAY-S-8C | 12 | CT Cable | MC |

* MC- Measurement Canada

G1 Series supports 100mA Solid Core CTs. ANSI C12.20 Class 0.5 REV-Grade.

G3 Series supports 333mV split-core CTs. Targeted at small commercial multi-point energy monitoring applications.

G4 Series supports Form A Pulse Inputs. Targeted at multi-point Electrical, Gas or Water meter reading (pulse collector) applications. Measurement Canada (MC) approved for Electrical or Gas billing applications.

G8 Series supports 80mA Solid Core CT's. ANSI C12.20 Class 0.5 REV-Grade. Measurement Canada approved for residential and demand billing applications

Detailed Specification Sheet

Current Transformers and CT Cables



Current Transformers and CT Cables

Triacta has CTs and Coils to match any energy management or revenue grade application. If you don't see what you are looking for, or are unsure of what is required for your particular application, don't hesitate to [contact us](#).

333mV Split-Core CTs - 0.75" Aperture

| Product Number | Product Name | Product Description | Regularly Stocked |
|----------------|---------------------------------------|---------------------------------------------------------------------------------------------------------|-------------------|
| 900-358-01 | 20A:333mV Split-Core (0.75" X 0.75") | 20A:333mV split-core CT with 0.75" X 0.75" aperture. 1.0% accuracy 10 within % - 130% of rated current. | Yes |
| 903-403-01 | 30A:333mV Split-Core (0.75" X 0.75") | 30A:333mV split-core CT with 0.75" X 0.75" aperture. 1.0% accuracy within 10% - 130% of rated current. | No |
| 903-400-01 | 50A:333mV Split-Core (0.75" X 0.75") | 50A:333mV split-core CT with 0.75" X 0.75" aperture. 1.0% accuracy within 10% - 130% of rated current. | Yes |
| 900-310-01 | 100A:333mV Split-Core (0.75" X 0.75") | 100A:333mV split-core CT with 0.75" X 0.75" aperture. 1.0% accuracy within 10% - 130% of rated current. | Yes |
| 900-312-01 | 150A:333mV Split-Core (0.75" X 0.75") | 150A:333mV split-core CT with 0.75" X 0.75" aperture. 1.0% accuracy within 10% - 130% of rated current. | No |
| 900-344-01 | 200A:333mV Split-Core (0.75" X 0.75") | 200A:333mV split-core CT with 0.75" X 0.75" aperture. 1.0% accuracy within 10% - 130% of rated current. | Yes |



[Download Specification Sheet](#)

333mV Split-Core CTs - 1.25" Aperture

| Product Number | Product Name | Product Description | Regularly Stocked |
|----------------|---------------------------------------|---------------------------------------------------------------------------------------------------------|-------------------|
| 900-301-01 | 150A:333mV Split-Core (1.25" X 1.25") | 150A:333mV split-core CT with 1.25" X 1.25" aperture. 1.0% accuracy within 10% - 130% of rated current. | No |
| 903-423-01 | 200A:333mV Split-Core (1.25" X 1.25") | 200A:333mV split-core CT with 1.25" X 1.25" aperture. 1.0% accuracy within 10% - 130% of rated current. | No |
| 900-303-01 | 250A:333mV Split-Core (1.25" X 1.25") | 250A:333mV split-core CT with 1.25" X 1.25" aperture. 1.0% accuracy within 10% - 130% of rated current. | No |
| 903-404-01 | 300A:333mV Split-Core (1.25" X 1.25") | 300A:333mV split-core CT with 1.25" X 1.25" aperture. 1.0% accuracy within 10% - 130% of rated current. | No |
| 900-311-01 | 400A:333mV Split-Core (1.25" X 1.25") | 400A:333mV split-core CT with 1.25" X 1.25" aperture. 1.0% accuracy within 10% - 130% of rated current. | No |
| 900-304-01 | 600A:333mV Split-Core (1.25" X 1.25") | 600A:333mV split-core CT with 1.25" X 1.25" aperture. 1.0% accuracy within 10% - 130% of rated current. | No |



[Download Specification Sheet](#)

333mV Split-Core CTs – 2.0” Aperture

| Product Number | Product Name | Product Description | Regularly Stocked |
|----------------|----------------------------------------|----------------------------------------------------------------------------------------------------------|-------------------|
| 903-421-01 | 200A:333mV Split-Core (2.00" X 2.00") | 200A:333mV split-core CT with 2.00" X 2.00" aperture. 1.0% accuracy within 10% - 130% of rated current. | No |
| 903-401-01 | 400A:333mV Split-Core (2.00" X 2.00") | 400A:333mV split-core CT with 2.00" X 2.00" aperture. 1.0% accuracy within 10% - 130% of rated current. | No |
| 900-306-01 | 600A:333mV Split-Core (2.00" X 2.00") | 600A:333mV split-core CT with 2.00" X 2.00" aperture. 1.0% accuracy within 10% - 130% of rated current. | No |
| 900-349-01 | 800A:333mV Split-Core (2.00" X 2.00") | 800A:333mV split-core CT with 2.00" X 2.00" aperture. 1.0% accuracy within 10% - 130% of rated current. | No |
| 900-307-01 | 1000A:333mV Split-Core (2.00" X 2.00") | 1000A:333mV split-core CT with 2.00" X 2.00" aperture. 1.0% accuracy within 10% - 130% of rated current. | No |
| 900-316-01 | 1500A:333mV Split-Core (2.00" X 2.00") | 1500A:333mV split-core CT with 2.00" X 2.00" aperture. 1.0% accuracy within 10% - 130% of rated current. | No |



[Download Specification Sheet](#)

333mV Large Aperture CTs

| Product Number | Product Name | Product Description | Regularly Stocked |
|----------------|--------------------------------------|----------------------------------------------------------------------------------------------------------|-------------------|
| 903-414-01 | 800A:333mV Split-Core (4.0" X 4.0") | 800A:333mV split-core CT with 4.00" X 4.00" aperture. 1.5% accuracy within 10% - 100% of rated current. | No |
| 900-352-01 | 1200A:333mV Split-Core (4.0" X 4.0") | 1200A:333mV split-core CT with 4.00" X 4.00" aperture. 1.5% accuracy within 10% - 100% of rated current. | No |
| 903-415-01 | 2000A:333mV Split-Core (4.0" X 4.0") | 2000A:333mV split-core CT with 4.00" X 4.00" aperture. 1.5% accuracy within 10% - 100% of rated current. | No |
| 900-315-01 | 3000A:333mV Split-Core (4.0" X 4.5") | 3000A:333mV split-core CT with 4.50" X 4.00" aperture. 1.5% accuracy within 10% - 100% of rated current. | No |



[Download Specification Sheet](#)

333mV Coil CTs

| Product Number | Magnalab Number | Product Name | Product Description | Regularly Stocked |
|----------------|----------------------|--------------------------------------------------|-----------------------------------------------------------------------------------------------------------------|-------------------|
| 903-418-01 | RCT-1200 5312-119 | 5000A:333mV Rogowski Coil 12"L (~3.8" aperture) | 5000A:333mV split-core Rogowski Coil CT (12" length, ~3.8" aperture) ~1.00% accuracy with proper installation. | No |
| 903-416-01 | RCT-1800 5318-118 | 5000A:333mV Rogowski Coil 18"L (~5.7" aperture) | 5000A:333mV split-core Rogowski Coil CT (18" length, ~5.7" aperture) ~1.00% accuracy with proper installation. | No |
| 903-419-01 | RCT-2400 5324-117 | 5000A:333mV Rogowski Coil 24"L (~7.6" aperture) | 5000A:333mV split-core Rogowski Coil CT (24" length, ~7.6" aperture) ~1.00% accuracy with proper installation. | No |
| 903-420-01 | RCT-3600 5319-103 | 5000A:333mV Rogowski Coil 36"L (~11.4" aperture) | 5000A:333mV split-core Rogowski Coil CT (36" length, ~11.4" aperture) ~1.00% accuracy with proper installation. | No |
| 903-422-01 | RCT-4800 5325-102 | 5000A:333mV Rogowski Coil 48"L (~15.2" aperture) | 5000A:333mV split-core Rogowski Coil CT (48" length, ~15.2" aperture) ~1.00% accuracy with proper installation. | No |



[Download Specification Sheet](#)

200A: 80mA Solid Core CTs – 0.75”

| Product Number | Product Name | Product Description | Listings and Approvals | Regularly Stocked |
|----------------|---------------------------------------|--------------------------------------------------------------------------------------------|------------------------|-------------------|
| 908-319-01 | 200A: 80mA Solid Core CT (0.75" dia.) | 200A: 80mA solid-core CT with 0.75" diameter aperture and 2.00" OD. 200 AAC, 600 VAC rated | Canada (MC) | Yes |



[Download Specification Sheet](#)

400A: 80mA Solid Core CTs – 2.24”

| Product Number | Product Name | Product Description | Listings and Approvals | Regularly Stocked |
|----------------|----------------------------------------|-----------------------------------------------------------------------|------------------------|-------------------|
| 908-315-01 | 400A : 80mA Solid Core CT (2.24" dia.) | 400A : 80mA solid-core CT with 2.24" diameter aperture. 600 VAC rated | Canada (MC), CA (CDFA) | Yes |



[Download Specification Sheet](#)

600A : 80mA Solid Core CTs – 3.25”

| Product Number | Product Name | Product Description | Regularly Stocked |
|----------------|----------------------------------------|-----------------------------------------------------------------------|-------------------|
| 900-371-01 | 600A : 80mA Solid Core CT (3.25" dia.) | 600A : 80mA solid-core CT with 3.25" diameter aperture. 600 VAC rated | Yes |



[Download Specification Sheet](#)

5A : 80mA CT Converter

| Product Number | Product Name | Product Description | Listings and Approvals | Regularly Stocked |
|----------------|--------------------|------------------------------------|------------------------|-------------------|
| 900-319-01 | 5 AMP CT Converter | 5A:80mA CT Converter 600 VAC Rated | Canada (MC) | Yes |



[Download Specification Sheet](#)

5A Solid Core CTs – 1.00” Aperture

| Product Number | Product Name | Product Description | Listings and Approvals | Regularly Stocked |
|----------------|--------------------------------|--------------------------------------------------------------------|------------------------|-------------------|
| 900-322-01 | 200A:5A Solid Core (1.0" dia.) | 200A:5A solid-core CT with 1.00" diameter aperture. 600 VAC rated. | Canada (MC) | No |



[Download Specification Sheet](#)

5A Solid Core CTs – 1.56” Aperture

| Product Number | Product Name | Product Description | Listings and Approvals | Regularly Stocked |
|----------------|---------------------------------|---------------------------------------------------------------------------------|------------------------|-------------------|
| 900-356-01 | 300A:5A Solid Core (1.56” dia.) | 300A:5A solid-core CT with 1.00” diameter aperture. 600 VAC rated. | Canada (MC) | No |
| 900-323-01 | 400A:5A Solid Core (1.56” dia.) | 400A:5A solid-core CT with 1.56” diameter aperture. 600 VAC rated. MC approved. | Canada (MC) | No |
| 905-128-01 | 600A:5A Solid Core (1.56” dia.) | 600A:5A solid-core CT with 1.56” diameter aperture. 600 VAC rated. MC approved. | Canada (MC) | No |
| 900-379-01 | 800A:5A Solid Core (1.56” dia.) | 800A:5A solid-core CT with 1.56” diameter aperture. 600 VAC rated. MC approved. | Canada (MC) | No |



[Download Specification Sheet](#)

5A Solid Core CTs – 3.25” Aperture

| Product Number | Product Name | Product Description | Listings and Approvals | Regularly Stocked |
|----------------|----------------------------------|----------------------------------------------------------------------------------|------------------------|-------------------|
| 905-131-01 | 400A:5A Solid Core (3.25” dia.) | 400A:5A solid-core CT with 3.25” diameter aperture. 600 VAC rated. | Canada (MC) | No |
| 900-339-01 | 600A:5A Solid Core (3.25” dia.) | 600A:5A solid-core CT with 3.25” diameter aperture. 600 VAC rated. | Canada (MC) | No |
| 900-368-01 | 800A:5A Solid Core (3.25” dia.) | 800A:5A solid-core CT with 3.25” diameter aperture. 600 VAC rated. | Canada (MC) | No |
| 900-340-01 | 1600A:5A Solid Core (3.25” dia.) | 1600A:5A solid-core CT with 3.25” diameter aperture. 600 VAC rated. MC approved. | Canada (MC) | No |
| 905-100-01 | 2000A:5A Solid Core (3.25” dia.) | 2000A:5A solid-core CT with 3.25” diameter aperture. 600 VAC rated. | Canada (MC) | No |



[Download Specification Sheet](#)

5A Solid Core CTs – 4.00” Aperture

| Product Number | Product Name | Product Description | Listings and Approvals | Regularly Stocked |
|----------------|----------------------------------|---------------------------------------------------------------------|------------------------|-------------------|
| 900-365-01 | 400A:5A Solid Core (4.00” dia.) | 400A:5A solid-core CT with 4.00” diameter aperture. 600 VAC rated. | Canada (MC) | No |
| 900-366-01 | 1000A:5A Solid Core (4.00” dia.) | 1000A:5A solid-core CT with 4.00” diameter aperture. 600 VAC rated. | Canada (MC) | No |



[Download Specification Sheet](#)

5A Split Core CTs – 1.31" x 2.16" Aperture

| Product Number | Product Name | Product Description | Regularly Stocked |
|----------------|------------------------------------|-------------------------------------------------------------------|-------------------|
| 905-129-01 | 200A:5A Split Core (1.31" X 2.16") | 200A:5A split-core CT with 1.31" X 2.16" aperture. 600 VAC rated. | No |
| 905-125-01 | 400A:5A Split Core (1.31" X 2.16") | 400A:5A split-core CT with 1.31" X 2.16" aperture. 600 VAC rated. | No |
| 905-114-01 | 600A:5A Split Core (1.31" X 2.16") | 600A:5A split-core CT with 1.31" X 2.16" aperture. 600 VAC rated. | No |



[Download Specification Sheet](#)

5A Split Core CTs – 2.00" x 3.50" Aperture

| Product Number | Product Name | Product Description | Regularly Stocked |
|----------------|-----------------------------------|--------------------------------------------------------------------|-------------------|
| 905-119-01 | 800A:5A Split Core (2.0" X 3.5") | 800A:5A split-core CT with 2.00" X 3.50" aperture. 600 VAC rated. | No |
| 905-126-01 | 1000A:5A Split Core (2.0" X 3.5") | 1000A:5A split-core CT with 2.00" X 3.50" aperture. 600 VAC rated. | No |



[Download Specification Sheet](#)

5A Split Core CTs – 2.6" x 6.25" Aperture

| Product Number | Product Name | Product Description | Regularly Stocked |
|----------------|------------------------------------|--------------------------------------------------------------------|-------------------|
| 905-117-01 | 2500A:5A Split Core (2.6" X 6.25") | 2500A:5A split-core CT with 2.60" X 6.25" aperture. 600 VAC rated. | No |
| 905-118-01 | 3200A:5A Split Core (2.6" X 6.25") | 3200A:5A split-core CT with 2.60" X 6.25" aperture. 600 VAC rated. | No |



[Download Specification Sheet](#)

5A Split Core CTs – 4.1" x 7.1" Aperture

| Product Number | Product Name | Product Description | Regularly Stocked |
|----------------|-----------------------------------|--------------------------------------------------------------------|-------------------|
| 905-105-01 | 2000A:5A Split Core (4.1" X 7.1") | 2000A:5A split-core CT with 4.10" X 7.10" aperture. 600 VAC rated. | No |



[Download Specification Sheet](#)

5A Split Core CTs – 2.00" x 5.50" Aperture

| Product Number | Product Name | Product Description | Regularly Stocked |
|----------------|-------------------------------------|--------------------------------------------------------------------|-------------------|
| 905-122-01 | 400A:5A Split Core (2.0" X 5.50") | 400A:5A split-core CT with 2.00" X 5.50" aperture. 600 VAC rated. | No |
| 905-127-01 | 800A:5A Split Core (2.00" X 5.50") | 800A:5A split-core CT with 2.00" X 5.50" aperture. 600 VAC rated. | No |
| 905-103-01 | 1200A:5A Split Core (2.00" X 5.50") | 1200A:5A split-core CT with 2.00" X 5.50" aperture. 600 VAC rated. | No |
| 905-107-01 | 1600A:5A Split Core (2.0" X 5.5") | 1600A:5A split-core CT with 2.00" X 5.50" aperture. 600 VAC rated. | No |
| 905-104-01 | 2000A:5A Split Core (2.0" X 5.5") | 2000A:5A split-core CT with 2.00" X 5.55" aperture. 600 VAC rated. | No |



[Download Specification Sheet](#)

5A Split Core CTs – 4.5" x 4.5" Aperture

| Product Number | Product Name | Product Description | Regularly Stocked |
|----------------|-----------------------------------|--------------------------------------------------------------------|-------------------|
| 905-121-01 | 400A:5A Split Core (4.5" X 4.5") | 400A:5A split-core CT with 4.50" X 4.50" aperture. 600 VAC rated. | No |
| 900-354-01 | 600A:5A Split Core (4.5" X 4.5") | 600A:5A split-core CT with 4.50" X 4.50" aperture. 600 VAC rated. | No |
| 905-115-01 | 1600A:5A Split Core (4.5" X 4.5") | 1600A:5A split-core CT with 4.50" X 4.50" aperture. 600 VAC rated. | No |
| 905-116-01 | 2000A:5A Split Core (4.5" X 4.5") | 2000A:5A split-core CT with 4.50" X 4.50" aperture. 600 VAC rated. | No |



[Download Specification Sheet](#)

5A Split Core CTs – 5.1" x 7.1" Aperture

| Product Number | Product Name | Product Description | Regularly Stocked |
|----------------|-----------------------------------|-------------------------------------------------------------------|-------------------|
| 905-130-01 | 1200A:5A Split Core (5.1" X 7.1") | 1200A:5A split-core CT with 5.10" X 7.10" aperture. 600 VAC rated | No |



[Download Specification Sheet](#)

CT Wire Cable LD – 6103, 6303, 4206

| Product Number | Product Name | Product Description | Regularly Stocked |
|----------------|-----------------------------------------------|------------------------------------------------------------------------------------------------------------------------------------------------------------------------------------------------------------------------------------------------------------------------------------|-------------------|
| 911-224-01 | CT Wire Cable - Low Density 7 Pair (4M/12FT) | Low-density CT wire cable assembly with integrated AmpChamp connector. Provides 7 color-coded, 22 AWG stranded wire pairs within a sheathed cable (4M/12 FT-0.56" O.D.) Connects with up to 24 CTs via butt-joining. For use with high-density PowerHawk meters: 6103, 6303, 4206 | Yes |
| 911-224-09 | CT Wire Cable - Low Density 7 Pair (9M/27FT) | Low-density CT wire cable assembly with integrated AmpChamp connector. Provides 7 color-coded, 22 AWG stranded wire pairs within a sheathed cable (9M/27 FT-0.56" O.D.) Connects with up to 24 CTs via butt-joining. For use with high-density PowerHawk meters: 6103, 6303, 4206 | Yes |
| 911-224-12 | CT Wire Cable - Low Density 7 Pair (12M/36FT) | Low-density CT wire cable assembly with integrated AmpChamp connector. Provides 7 color-coded, 22 AWG stranded wire pairs within a sheathed cable (12M/36 FT-0.56" O.D.) Connects with up to 24 CTs via butt-joining. For use with high-density PowerHawk meters: 6103, 6303, 4206 | Yes |



[Download Specification Sheet](#)

CT Wire Cable HD - 6112, 6312, 4224

| Product Number | Product Name | Product Description | Regularly Stocked |
|----------------|-------------------------------------------------|--------------------------------------------------------------------------------------------------------------------------------------------------------------------------------------------------------------------------------------------------------------------------------------------|-------------------|
| 900-210-01 | CT Wire Cable - High Density 27 Pair (4M/12FT) | High-density CT wire cable assembly with integrated AmpChamp connector. Provides 27 color-coded, 22 AWG stranded wire pairs within a sheathed cable (4M/12 FT-0.56" O.D.) Connects with up to 24 or 25 CTs via butt-joining. For use with high-density PowerHawk meters: 6112, 6312, 4224, | Yes |
| 900-211-01 | CT Wire Cable - High Density 27 Pair (8M/24FT)) | High-density CT wire cable assembly with integrated AmpChamp connector. Provides 27 color-coded, 22 AWG stranded wire pairs within a sheathed cable (8M/24 FT-0.56" O.D.) Connects with up to 24 or 25 CTs via butt-joining. For use with high-density PowerHawk meters: 6112, 6312, 4224, | Yes |
| 900-210-12 | CT Wire Cable - High Density 27 Pair (12M/36FT) | High-density CT wire cable assembly with integrated AmpChamp connector. Provides 27 color-coded, 22 AWG stranded wire pairs within a sheathed cable (12M/36 FT-0.56" O.D.) Connects with up to 24 or 25 CTs via butt-joining. For use with high-density PowerHawk meters: 6112, 6312, 4224 | Yes |



[Download Specification Sheet](#)

CT Wire Cable HD with Shorting - 6112, 6312

| Product Number | Product Name | Product Description | Regularly Stocked |
|----------------|-------------------------------------------------------------------------------------|-------------------------------------------------------------------------------------------------------------------------------------------------------------------------------------------------------------------------------------------------------------------------------------|-------------------|
| 940-022-01 | CT Wire Cable HD w/Shorting / Amphenol Connection Adaptor /& Filler Plate (4M/12FT) | High-density CT wire cable assembly with integrated mA CT shorting connector. Provides 27 color-coded, 22 AWG stranded wire pairs within a sheathed cable (4M/12 FT-0.56" O.D.) Connects with up to 24 CTs via butt-joining. For use with high-density PowerHawk meters: 6112, 6312 | Yes |



[Download Specification Sheet](#)

CT Wire Cable – 6412

| Product Number | Product Name | Product Description | Regularly Stocked |
|----------------|---------------------------------------------------------------|----------------------------------------------------------------------------------------------------------------------------------------------------------------------------------------------|-------------------|
| 900-219-01 | CT Wire Cable - High Density (5A Meters) - 12 Pair (2M/06 FT) | Sheathed CT wire cable (2M/6 FT-0.56" O.D.) with color-coded, 18 AWG wire pairs connecting up to 12 CTs (A&C phase) via butt-joining. For use with high-density PowerHawk meters (5A): 6412. | Yes |



[Download Specification Sheet](#)

CT Cable with Shorting – GATEWAY

| Product Number | Product Name | Product Description | Regularly Stocked |
|----------------|--------------------------------------------------------------|-----------------------------------------------------------------------------------------------------------------------------------------------------------------------------------------------------|-------------------|
| 911-244-01 | Gateway CT Cable with Integrated Shorting 12 Pair - 4M/12FT | High-density, Integrated Shorting CT wire harness. Provides 12 color-coded, 22 AWG stranded wire pairs within a sheathed cable (4M/12 FT-0.386" O.D.) Connects with up to 12 CTs via butt-joining. | Yes |
| 911-244-08 | Gateway CT Cable with Integrated Shorting 12 Pair - 8M/24FT | High-density, Integrated Shorting CT wire harness. Provides 12 color-coded, 22 AWG stranded wire pairs within a sheathed cable (8M/24 FT-0.386" O.D.) Connects with up to 12 CTs via butt-joining. | Yes |
| 911-244-12 | Gateway CT Cable with Integrated Shorting 12 Pair - 12M/36FT | High-density, Integrated Shorting CT wire harness. Provides 12 color-coded, 22 AWG stranded wire pairs within a sheathed cable (12M/36 FT-0.386" O.D.) Connects with up to 12 CTs via butt-joining. | Yes |



[Download Specification Sheet](#)

CT Cable Unterminated – GATEWAY

| Product Number | Product Name | Product Description | Regularly Stocked |
|----------------|---------------------------------------------------|-------------------------------------------------------------------------------------------------------------------------------------------------------------------------------------------------------------------------------------------------|-------------------|
| 911-247-01 | GW CT Whip Cable- Unterminated 12 Pair (4M/12FT) | High-density, unterminated CT whip cable. Provides 12 color-coded, 22 AWG stranded wire pairs within a sheathed cable (4M/12 FT-0.386" O.D.) Connects with up to 12 CTs via butt-joining. For use with GATEWAY GTTTT systems. Rated 600V FT-4. | Yes |
| 911-247-08 | GW CT Whip Cable- Unterminated 12 Pair (8M/24FT) | High-density, unterminated CT whip cable. Provides 12 color-coded, 22 AWG stranded wire pairs within a sheathed cable (8M/24 FT-0.386" O.D.) Connects with up to 12 CTs via butt-joining. For use with GATEWAY GTTTT systems. Rated 600V FT-4. | Yes |
| 911-247-12 | GW CT Whip Cable- Unterminated 12 Pair (12M/36FT) | High-density, unterminated CT whip cable. Provides 12 color-coded, 22 AWG stranded wire pairs within a sheathed cable (12M/36 FT-0.386" O.D.) Connects with up to 12 CTs via butt-joining. For use with GATEWAY GTTTT systems. Rated 600V FT-4. | Yes |



GATEWAY Pre-Crimped CT Cable Assembly

| Product Number | Product Name | Product Description | Regularly Stocked |
|----------------|-------------------------------------------------------------------------|-----------------------------------------------------------------------------------------------------------------------------------------------------------------------------------------------------------------------------------------------------------------------------------------------------------------------------------------------------------------------------------------------------------|-------------------|
| 911-268-01 | Triacta GATEWAY CT Whip- 12 Pair- (4M/12FT) w/Pre-Crimped 200A:80mA CTs | Triacta GATEWAY CT whip assembly with an integrated shorting connector providing 12 color-coded, 22 AWG stranded wire pairs within a jacketed cable (4 m / 12 ft, 0.386 in O.D.). Deploys with GATEWAY™ E000002-type meter base and connects GATEWAY™ meter head with up to 12 CTs via butt-spliced connections. Assembled with 12 qty. pre-crimped and tested 200A:80mA solid-core CTs (PN: 908-319-01). | Yes |



[Download Specification Sheet](#)

Shorting Terminations, Power Transformers and other Accessories



Shorting Terminations and Power Transformers

Triacta manufactures high grade, CT shorting and termination and Power Transformers that meet all regulatory approvals. If you don't see what you are looking for, or are unsure of what is required for your particular application, don't hesitate to [contact us](#).

CT Shorting Assembly

| Product Number | Product Name | Product Description | Regularly Stocked |
|----------------|---------------------------------------------|-----------------------------------------------------------------------------------------------------------------------------|-------------------|
| 913-514-01 | Triacta CT Shorting Assembly (Multi-Module) | Multi-module mA CT shorting assembly within a 13.39" x 8.79" enclosure. Provides CT shorting for up to 4 PowerHawk devices. | Yes |
| 913-515-01 | Triacta CT Shorting PCB Module | | |



[Download Specification Sheet](#)

CT Shorting Module

| Product Number | Product Name | Product Description | Regularly Stocked |
|----------------|------------------------------|-------------------------------------------------------------------------------------------------------------------------------------------------------------------------------------|-------------------|
| 913-510-01 | Triacta CT Shorting Assembly | Triacta CT termination and shorting assembly in a 13.4" X 8.8" metal enclosure. Provides 24 screw-down terminals and a 12" interconnecting wire cable to a single PowerHawk device. | Yes |



[Download Specification Sheet](#)

CT Termination Module

| Product Number | Product Name | Product Description | Regularly Stocked |
|----------------|---------------------------------|-------------------------------------------------------------------------------------------------------------------------------------------------------------------------------------|-------------------|
| 913-511-01 | Triacta CT Termination Assembly | Triacta CT termination and shorting assembly in a 13.4" X 8.8" metal enclosure. Provides 24 screw-down terminals and a 12" interconnecting wire cable to a single PowerHawk device. | Yes |



[Download Specification Sheet](#)

PT Assembly

| Product Number | Product Name | Product Description | Regularly Stocked |
|----------------|--------------------------------------------------|----------------------------------------------------------------------------------------------------------------------------------------------------------------------------------------------------------------------------------------------------------|-------------------|
| 912-310-01 | Triacta 480V/120V Delta PT Assembly | 3-phase voltage transformer in a 8.39" X 13.53" metal enclosure. Enables source voltages of 347V, 480V, or 600V to connect with Triacta PowerHawk-120V or Gateway meters. Meets all regulatory, electrical safety and ANSI 0.5 Accuracy Class Standards. | Yes |
| 912-311-01 | Triacta 347V/600V Wye and 600V Delta PT Assembly | | |



[Download Specification Sheet](#)

CT Termination/Meter Mounting Back Plate

| Product Number | Product Name | Product Description | Regularly Stocked |
|----------------|------------------------------------------|-----------------------------------------------------------------------------------------------------------------------------------------------------------------------------------------------------|-------------------|
| 913-516-01 | CT Termination/Meter Mounting Back Plate | Triacta CT Termination/Meter Mounting Back Plate is a steel wall-mount plate to accommodate one PowerHawk Meter (4x06, 4x24, 6x06, 6x12) meter and one Triacta CT Shorting or Termination Assembly. | No |



[Download Specification Sheet](#)

GATEWAY and GATEWAY-S Dust Covers

| Product Number | Product Name | Product Description | Regularly Stocked |
|----------------|-------------------|----------------------------------------------------------------------------------|-------------------|
| 083-009-01 | Dust Cover G5 MGM | GATEWAY Dust Cover to be used when Meter Base is installed prior to Meter Head | Yes |
| 083-010-01 | Dust Cover SGM | GATEWAY-S Dust Cover to be used when Meter Base is installed prior to Meter Head | Yes |

